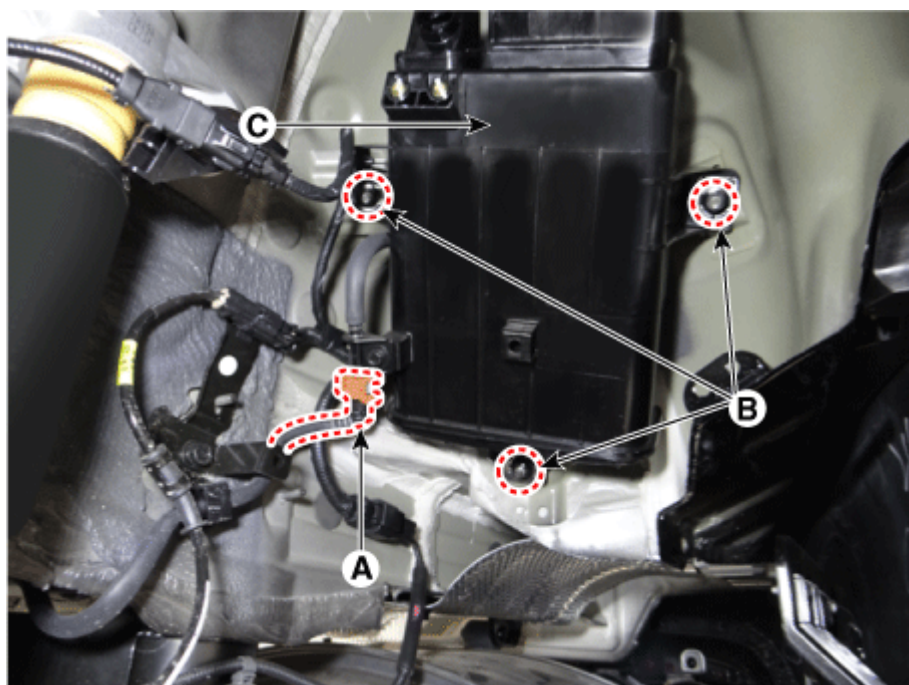
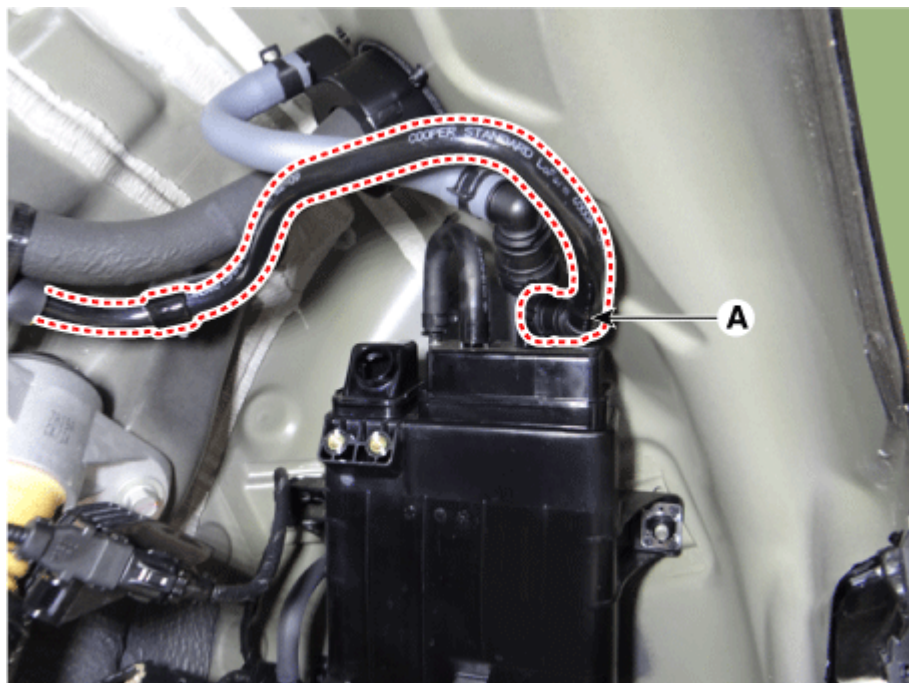


Please rate this document after reviewing at the bottom of this page.

REMOVAL

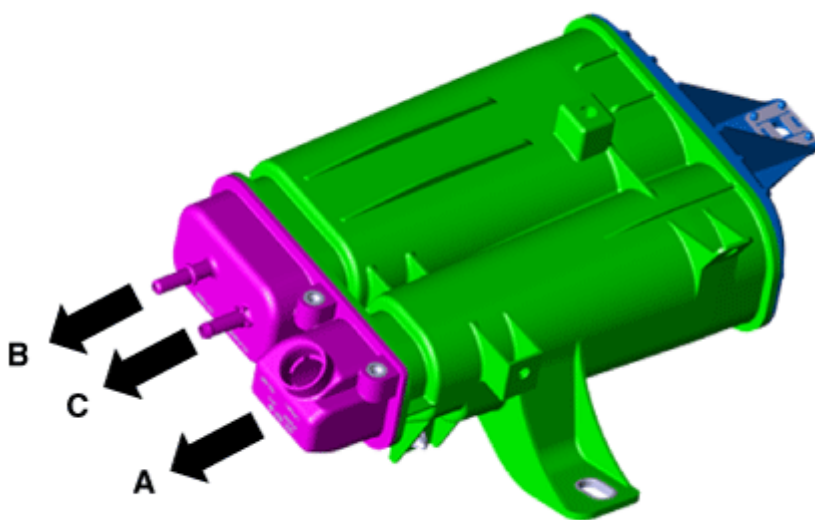
1. Switch "OFF" the ignition and disconnect the negative (-) battery terminal.
2. Remove the rear-left wheel & tire and wheel house cover.
3. Remove the fuel tank air filter.
(Refer to Emission Control System - Fuel Tank Air Filter")
4. Disconnect the vapor hose quick-connector (A).
5. Remove the canister assembly (C) from the vehicle after removing the mounting nuts (B).





INSPECTION

1. Check for the following items visually.
 - Cracks or leakage of the canister
 - Loose connection, distortion, or damage of the vapor hose/tube



- A: Canister ↔ Atmosphere
B: Canister ↔ Fuel Tank
C: Canister ↔ Intake Manifold

INSTALLATION

1. Install in the reverse order of removal.

Canister protector mounting bolt:
3.9 - 5.9 N·m (0.4 - 0.6 kgf·m, 2.9 - 4.3 lb·ft)

Canister mounting bolt:
3.9 - 5.9 N·m (0.4 - 0.6 kgf·m, 2.9 - 4.3 lb·ft)

* Thanks for your cooperation for the more quality. Please surely rate this document before

English 